

\$760,000 - Ne 16 24 24 W4 Range Road 243, Rural Wheatland County

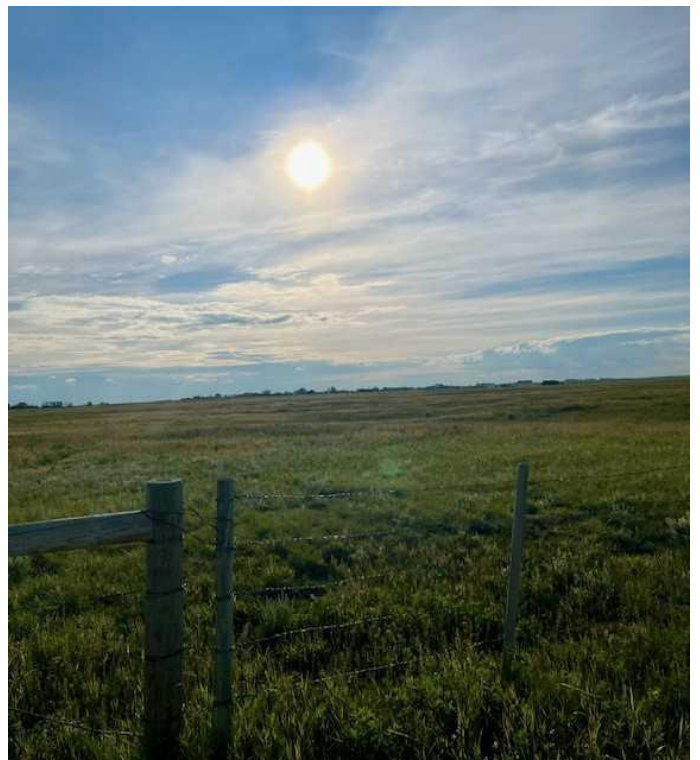
MLS® #A2203552

\$760,000

0 Bedroom, 0.00 Bathroom,
Land on 120.00 Acres

N/A, Rural Wheatland County, Alberta

Discover 120 ACRES of stunning bare land, perfectly situated just minutes from Strathmore with convenient paved road access. This expansive property is zoned Agriculture, offering endless possibilities whether you are looking to build your dream home, start a hobby farm or create an equestrian paradise. With ample space for horses, livestock or crop, this land provides the perfect blend of rural tranquility and modern convivence. Don't miss this rare opportunity to own a versatile piece of land in a prime location. Call your favorite Realtor today



Essential Information

MLS® #	A2203552
Price	\$760,000
Bathrooms	0.00
Acres	120.00
Type	Land
Sub-Type	Residential Land
Status	Active

Community Information

Address	Ne 16 24 24 W4 Range Road 243
Subdivision	N/A
City	Rural Wheatland County
County	Wheatland County

Province	Alberta
Postal Code	T1P2C5

Amenities

Utilities	Electricity at Lot Line, Natural Gas at Lot Line
-----------	--

Exterior

Lot Description	Pasture
-----------------	---------

Additional Information

Date Listed	March 18th, 2025
-------------	------------------

Days on Market	30
----------------	----

Zoning	1
--------	---

Listing Details

Listing Office	CIR Realty
----------------	------------

Data is supplied by Pillar 9â„¢ MLSÂ® System. Pillar 9â„¢ is the owner of the copyright in its MLSÂ® System. Data is deemed reliable but is not guaranteed accurate by Pillar 9â„¢. The trademarks MLSÂ®, Multiple Listing ServiceÂ® and the associated logos are owned by The Canadian Real Estate Association (CREA) and identify the quality of services provided by real estate professionals who are members of CREA. Used under license.