

\$849,000 - 139 Midpark Crescent Se, Calgary

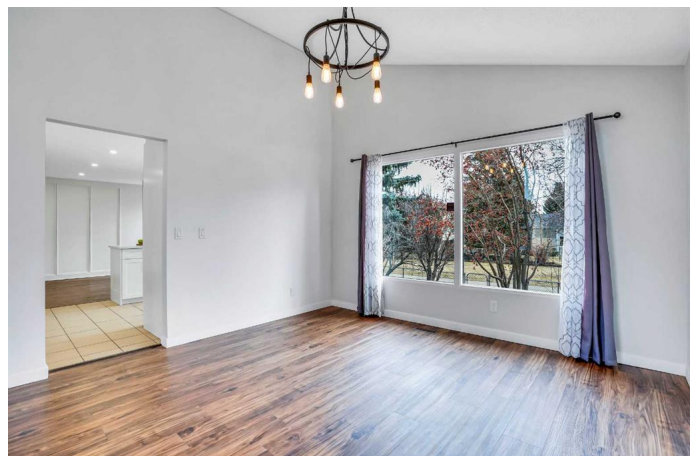
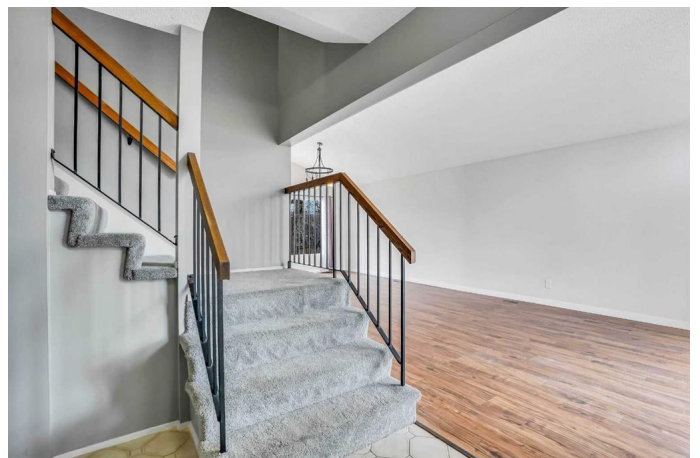
MLS® #A2203173

\$849,000

4 Bedroom, 3.00 Bathroom, 1,936 sqft
Residential on 0.13 Acres

Midnapore, Calgary, Alberta

This enchanting two-story lakeside residence combines modern style with refined living. Meticulously upgraded, every detail in this home harmonizes comfort, functionality, and natural beauty. The main floor features a grand vaulted ceiling that bathes the living area in natural light, creating a luminous and welcoming ambiance perfect for gatherings or quiet relaxation. A dual-purpose den/office offers a versatile space with soft lighting and custom shelving, ideal for remote work or cozy evenings by the fireplace. Step out onto the deck in the south-facing backyard to enjoy the fresh air and bright sunlight. The chef-ready kitchen has been newly renovated with quartz countertops, soft-close cabinetry, and premium stainless steel appliances, making it perfect for both casual meals and gourmet creations. Upstairs, the spacious primary bedroom features a large closet and an upgraded 3-piece ensuite bathroom, offering a private retreat. The two additional bedrooms boast large windows framing views of the surrounding greenery, along with ample closet space. There is also direct access from the upper level to a serene walking path that leads toward the lake, blending indoor comfort with outdoor exploration. The finished basement includes a guest bedroom and a large recreation room with a fireplace, ideal for movie nights or hosting guests. Oversized and custom garage storage solutions provide year-round convenience for vehicles, tools, or hobbies. This home is situated just two blocks



from the tranquil lakefront and a 2-minute walk to elementary and junior high schools, as well as playgrounds, offering a perfect balance of serenity and community connectivity. The home has been recently upgraded, including fresh paint throughout, replacement of most windows, a new kitchen and appliances, newly renovated bathrooms, and a newer roof (2020). The fresh neutral paint enhances the modern minimalist aesthetic, while potted plants and framed art add warmth to every corner. More than just a residence, this home is a haven where lakeside tranquility meets contemporary elegance, offering a lifestyle designed for both relaxation and vibrant living.

Built in 1981

Essential Information

MLS® #	A2203173
Price	\$849,000
Bedrooms	4
Bathrooms	3.00
Full Baths	2
Half Baths	1
Square Footage	1,936
Acres	0.13
Year Built	1981
Type	Residential
Sub-Type	Detached
Style	2 Storey
Status	Active

Community Information

Address	139 Midpark Crescent Se
Subdivision	Midnapore
City	Calgary
County	Calgary
Province	Alberta

Postal Code T2X 1S7

Amenities

Amenities Park, Playground, Recreation Facilities
Parking Spaces 4
Parking Double Garage Attached
of Garages 451

Interior

Interior Features Closet Organizers, No Animal Home, No Smoking Home, See Remarks, Vaulted Ceiling(s)
Appliances Dishwasher, Dryer, Garage Control(s), Range Hood, Refrigerator, Washer, Window Coverings, Electric Range
Heating Fireplace(s), Forced Air, Natural Gas
Cooling None
Fireplace Yes
of Fireplaces 2
Fireplaces Wood Burning
Has Basement Yes
Basement Finished, Full

Exterior

Exterior Features Playground, Private Entrance, Private Yard
Lot Description Back Yard, Backs on to Park/Green Space, Landscaped, Rectangular Lot
Roof Asphalt Shingle
Construction Brick, Concrete, Wood Frame
Foundation Poured Concrete

Additional Information

Date Listed March 21st, 2025
Days on Market 20
Zoning R-CG
HOA Fees 320
HOA Fees Freq. ANN

Listing Details

Listing Office eXp Realty

Data is supplied by Pillar 9â„¢ MLSÂ® System. Pillar 9â„¢ is the owner of the copyright in its MLSÂ® System. Data is deemed reliable but is not guaranteed accurate by Pillar 9â„¢. The trademarks MLSÂ®, Multiple Listing ServiceÂ® and

the associated logos are owned by The Canadian Real Estate Association (CREA) and identify the quality of services provided by real estate professionals who are members of CREA. Used under license.