

\$9,550,000 - 159 Acres Range Road 281, Chestermere

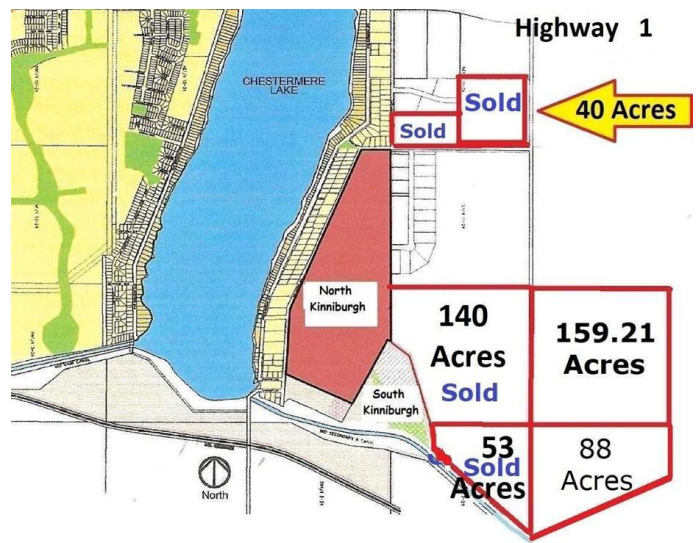
MLS® #A2189910

\$9,550,000

0 Bedroom, 0.00 Bathroom,
Land on 159.21 Acres

East Chestermere, Chestermere, Alberta

Adjoining 140 and 53 acre parcels have sold recently. Great NEWS, East and South Chestermere are in active development with Centron Clearwater Park development now underway. City Stormwater Master Plan indicates that a portion of these lands will be integrated with a City-approved stormwater system; this may provide a water feature and potential enhanced value for adjacent lands. This may be your opportunity with 159.21 Acres located inside the CITY of CHESTERMERE, east of KINNIBURGH, on Range Road 281 south of Highway 1. Lots of development underway in Chestermere, buy now for your future development opportunity. The future looks bright with De Havilland Canada Aerospace headquarters and others coming to Wheatland County, Chestermere is ideally suited to meet all their needs. City Municipal Development Plan currently being amended. This 159 acre parcel is available individually or together with adjoining 88 acre parcel, providing opportunity for large land holdings. Chestermere Health Centre and elementary school in neighboring Kinniburgh community. GST applicable. Fenced and gated, viewings by appointment only.



Essential Information

MLS® # A2189910
Price \$9,550,000

| | |
|-----------|------------------|
| Bathrooms | 0.00 |
| Acres | 159.21 |
| Type | Land |
| Sub-Type | Residential Land |
| Status | Active |

Community Information

| | |
|-------------|--------------------------|
| Address | 159 Acres Range Road 281 |
| Subdivision | East Chestermere |
| City | Chestermere |
| County | Chestermere |
| Province | Alberta |
| Postal Code | T1X 0M5 |

Additional Information

| | |
|----------------|--------------------|
| Date Listed | January 24th, 2025 |
| Days on Market | 72 |
| Zoning | UT |

Listing Details

| | |
|----------------|-----------------------------|
| Listing Office | Legacy Real Estate Services |
|----------------|-----------------------------|

Data is supplied by Pillar 9â„¢ MLSÂ® System. Pillar 9â„¢ is the owner of the copyright in its MLSÂ® System. Data is deemed reliable but is not guaranteed accurate by Pillar 9â„¢. The trademarks MLSÂ®, Multiple Listing ServiceÂ® and the associated logos are owned by The Canadian Real Estate Association (CREA) and identify the quality of services provided by real estate professionals who are members of CREA. Used under license.