

# \$574,000 - 1200 Waterford Drive, Chestermere

---

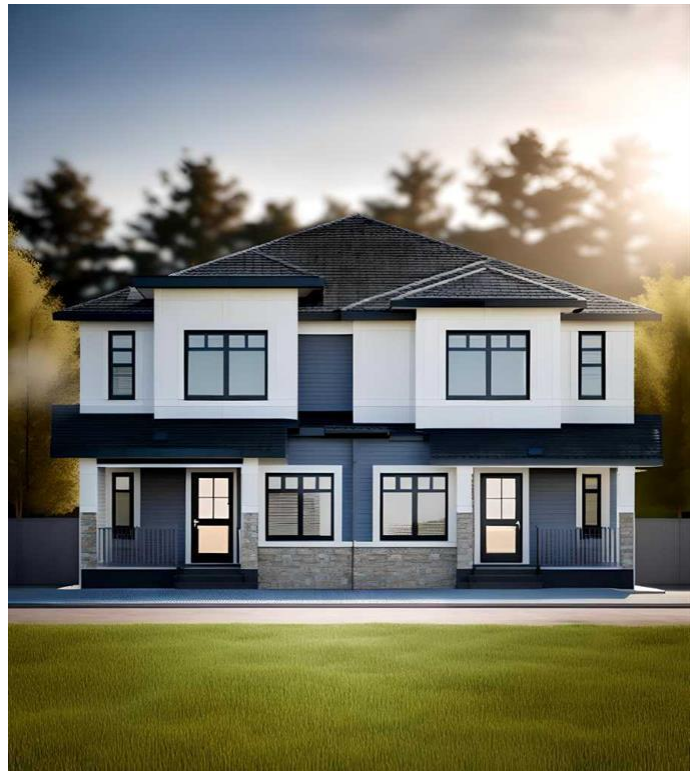
MLS® #A2162447

## \$574,000

3 Bedroom, 3.00 Bathroom, 1,690 sqft  
Residential on 0.08 Acres

NONE, Chestermere, Alberta

This Brand new home built by award winning builder, Prominent Homes, in the Brand New Community of Waterford! This home is featured on a corner lot with 1690 sqft of living space. This Beautiful home features 3 Bedrooms, 3 Full Bathrooms including a Full Bathroom and Flex on the Main Floor! THE MAIN floor also features a floor plan with a Gorgeous Kitchen that has an Island in the Kitchen, Dining Nook, a Living Room with a 50" Electric Fireplace! THE UPPER floor has 3 Bedrooms including a Large Master Bedroom with a huge walk in closet and a standing fiberglass shower. It also comes with Alberta New Home Warranty. Photos are representative.



Built in 2024

## Essential Information

MLS® #	A2162447
Price	\$574,000
Bedrooms	3
Bathrooms	3.00
Full Baths	3
Square Footage	1,690
Acres	0.08
Year Built	2024
Type	Residential
Sub-Type	Semi Detached
Style	Side by Side, 2 Storey

Status Active

### Community Information

Address 1200 Waterford Drive

Subdivision NONE

City Chestermere

County Chestermere

Province Alberta

Postal Code T1X2T7

### Amenities

Amenities None

Parking Spaces 2

Parking Parking Pad

### Interior

Interior Features Kitchen Island, Pantry, Bathroom Rough-in, Stone Counters, Separate Entrance, Walk-In Closet(s)

Appliances Dishwasher, Refrigerator, Dryer, Electric Range, Microwave Hood Fan, Washer

Heating Forced Air, Natural Gas

Cooling None

Fireplace Yes

# of Fireplaces 1

Fireplaces Electric, Mantle

Has Basement Yes

Basement See Remarks

### Exterior

Exterior Features None

Lot Description Back Lane, Back Yard, Corner Lot, Level

Roof Asphalt Shingle

Construction Vinyl Siding, Wood Frame

Foundation Poured Concrete

### Additional Information

Date Listed September 5th, 2024

Days on Market 211

Zoning R-G

## Listing Details

Listing Office            Bode Platform Inc.

Data is supplied by Pillar 9â,,ç MLSÂ® System. Pillar 9â,,ç is the owner of the copyright in its MLSÂ® System. Data is deemed reliable but is not guaranteed accurate by Pillar 9â,,ç. The trademarks MLSÂ®, Multiple Listing ServiceÂ® and the associated logos are owned by The Canadian Real Estate Association (CREA) and identify the quality of services provided by real estate professionals who are members of CREA. Used under license.