

# \$400,000 - 6437 19 Street Se, Calgary

MLS® #A2143385

## \$400,000

1 Bedroom, 1.00 Bathroom, 604 sqft  
Residential on 0.07 Acres

Ogden, Calgary, Alberta

\*ATTENTION ALL DEVELOPERS & INVESTORS\* This 25 x 120 " R-C2 lot nestled in the vibrant and rapidly evolving neighborhood of Ogden. With easy access to Deerfoot, Stoney and Glenmore Trails. Mostly land value only, this property is being sold "as-is where-is" condition. Excellent location " close to the Bow River, Schools, Jack Setters Arena, Shopping and Amenities. New Green Line (Lynnwood/Millican Station will be only minutes away (Green Line completion is estimated in 2027).

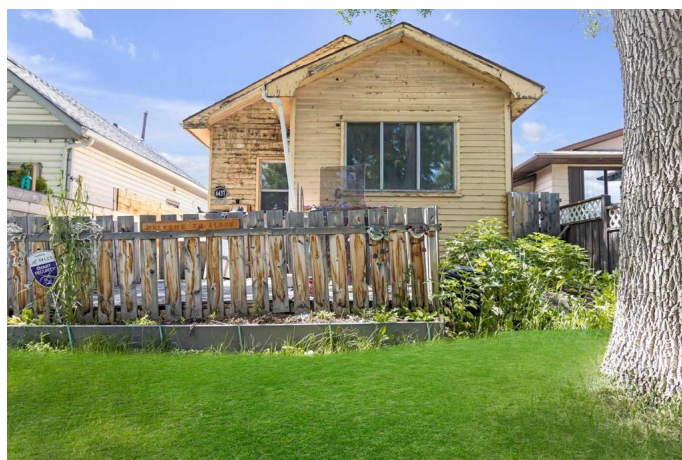
Built in 1914

## Essential Information

MLS® #	A2143385
Price	\$400,000
Bedrooms	1
Bathrooms	1.00
Full Baths	1
Square Footage	604
Acres	0.07
Year Built	1914
Type	Residential
Sub-Type	Detached
Style	Bungalow
Status	Active

## Community Information

Address 6437 19 Street Se



Subdivision	Ogden
City	Calgary
County	Calgary
Province	Alberta
Postal Code	T2C 0N8

### **Amenities**

Parking Spaces	2
Parking	Double Garage Detached
# of Garages	2

### **Interior**

Interior Features	See Remarks
Appliances	Electric Stove, Refrigerator, Window Coverings
Heating	Forced Air, Natural Gas
Cooling	None
Has Basement	Yes
Basement	Crawl Space, See Remarks

### **Exterior**

Exterior Features	None
Lot Description	Back Lane, Back Yard, Rectangular Lot
Roof	Asphalt Shingle
Construction	Wood Frame, Wood Siding
Foundation	See Remarks

### **Additional Information**

Date Listed	June 25th, 2024
Days on Market	283
Zoning	R-C2

### **Listing Details**

Listing Office	Real Broker
----------------	-------------

Data is supplied by Pillar 9â„¢ MLSÂ® System. Pillar 9â„¢ is the owner of the copyright in its MLSÂ® System. Data is deemed reliable but is not guaranteed accurate by Pillar 9â„¢. The trademarks MLSÂ®, Multiple Listing ServiceÂ® and the associated logos are owned by The Canadian Real Estate Association (CREA) and identify the quality of services provided by real estate professionals who are members of CREA. Used under license.